

Multi-Family Housing in Palo Alto

In preparation for our January 21, 2020 please visit as many of the multi-family residential projects in Palo Alto listed below and located on this interactive map:

<https://tinyurl.com/qrowg98>

These projects exhibit multi-family character and may serve as a precedent for the NVCAP Plan Area. Take note of your preferences and be prepared to discuss during the January 21, 2020 Working Group Meeting.

Please consider the following during your evaluation of the projects:

- 1. Note your preferences about the building (ground floor, architectural style, materials, height, windows and balconies, etc.)**
- 2. Note your preferences about the street and landscape surrounding the building (sidewalk width, planting, outdoor furniture, paving, etc.)**
- 3. Select 3 architectural and/or landscape features that make this project appropriate for the NVCAP Plan Area.**
- 4. Select 3 architectural and/or landscape features that could be improved upon.**
- 5. Note how the project is situated in the surrounding neighborhood. Consider height, materials, and relationship between buildings.**

Multi-Family Housing in Palo Alto

In preparation for our January 21, 2020 please visit as many of the multi-family residential projects in Palo Alto listed below and located on this interactive map: <https://tinyurl.com/growg98>

These projects exhibit multi-family character and may serve as a precedent for the NVCAP Plan Area. Take note of your preferences and be prepared to discuss during the January 21, 2020 Working Group Meeting.

BUILT PROJECTS



The Hamilton
555 Byron Street

36 Units
31 du/acre
4 Stories
Condo
Constructed 1997



430 Forest Avenue

13 Units
25 du/acre
3 Stories
Rental/Condo Mix
Constructed 2018



707 Bryant Street

19 Units
28 du/acre
3 Stories
Condo
Constructed 1977



The Weatherly
315 Homer Avenue

130 Units
37 du/acre
4 Stories
Condo
Constructed 2004



Woodmark
325 Channing Ave

36 Units
31 du/acre
4 Stories
Condo
Constructed 2005



Oak Court
845 Ramona Street

53 Units
43 du/acre
3 Stories
Rental
Constructed 2005



801 Alma Street

50 Units
89 du/acre
4 Stories
Constructed 1999



800 High Street

60 Units
62 du/acre
4 Stories
Constructed 2006



California Park
2301 Park Blvd.

45 Units
26 du/acre
3 Stories
Constructed 1989



Mayfield Place
2500 El Camino Real

70 Units
40 du/acre
4 Stories
Constructed 2017

**2650 Birch Street**

9 Units
20 du/acre
3 Stories
Constructed 1997

**435 Sheridan Ave**

35 Units
33 du/acre
3 Stories
Constructed 1999

**Park Plaza**
195 Page Mill Road

82 Units
33 du/acre
3 Stories
Constructed 2016

**Sterling Park**
3270 W Bayshore Avenue

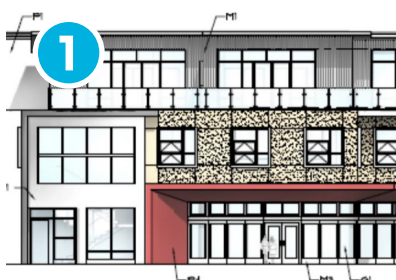
96 Units
15 du/acre
3 Stories
Constructed 2011

**Taube Koret Campus**
3921 Fabian Way

159 Units
19 du/acre
4 Stories
Constructed 2009

**Rosewalk**
444 San Antonio Road

48 Units
16 du/acre
3 Stories
Constructed 1988

PROPOSED OR APPROVED PROJECTS**901 High Street**

11 Units
34 du/acre
3 Stories
Proposed 2016

**2585 El Camino Real**

13 Units
14 du/acre
3 Stories
Under Construction

**2755 El Camino Real**

57 Units
127 du/acre
4 Stories
Rental
Approved 2018

**441 Page Mill Road**

16 Units
26 du/acre
3 Stories
Under Construction



3225 El Camino Real

8 Units
11 du/acre
4 Stories
Approved 2019



Wilton Court

3705-3709
El Camino Real

59 Units
128 du/acre
4 Stories
Approved 2019



3877 El Camino Real

17 Units
14 du/acre
3 Stories
Approved 2017



788 San Antonio Road

102 Units
104 du/Acre
4 Stories
Proposed 2019

PROJECT LOCATIONS

